

Sanctuary Trust

Social Impact Report 2024 – 1 July 2023-30 June 2024



Welcome to the Annual Social Impact Report of Sanctuary Trust.

As the Chair of Sanctuary Trust, it is my honour to present this year's report, which highlights the profound impact our organisation has made in the community over the past year. Our mission has always been to provide support, care, and a safe environment for those in need, and I am proud to say that with the unwavering support of our donors, dedicated team, and the community, we have continued to make a significant difference.

This year, we have reached new milestones and expanded our programs to better serve the vulnerable men of Jersey. From providing shelter and essential services to offering long-term support and rehabilitation, the work of Sanctuary Trust has been pivotal in transforming lives. Our success is a testament to the collective effort of everyone involved.

The value of Sanctuary Trust to the community cannot be overstated. Every success story, every individual who finds hope and stability through our services, is a reflection of the compassionate and generous spirit that defines Jersey. It is your support – our donors, partners, volunteers, and staff – that fuels our mission and drives us to achieve even greater heights.

To our donors, your generosity is the cornerstone of our achievements. Your contributions have enabled us to expand our reach, enhance our facilities, and develop innovative programs that address the evolving needs of our community. Every donation, no matter the size, makes a tangible difference in the lives of those we serve. We are deeply grateful for your continued trust and support.

To our dedicated team, your commitment and hard work are the heart of Sanctuary Trust. Your tireless efforts, empathy, and professionalism ensure that we provide the highest level of care and support to those who need it most. You are the driving force behind every success, and I am continually inspired by your passion and dedication.

As we look ahead, we remain steadfast in our commitment to making a positive impact in Jersey. Together, we will continue to build a community where everyone has the opportunity to thrive. Thank you for being a part of our journey and for believing in the power of compassion and community.

With sincere gratitude,

Tim Ringsdore
Chair, Sanctuary



Who we are



Sanctuary Trust was established in 2011 to create a safe and secure place for men facing major crises in their lives. Sanctuary offers far more than accommodation, we actively support our residents with their underlying issues with the aim of helping them achieve active, positive roles in society.

The men that we support can have a range of issues: homelessness; economic hardship; domestic abuse; mental health issues; family/relationship breakdown or addiction issues, be it gambling, drugs or alcohol.

What we do

30 resident Beds in Jersey across 3 houses
 Houses set up for residents at different stages of their journey



Housing

5 full time support workers
 Assisting residents set, track and achieve their goals/outcomes
 Guiding and encouraging residents on their path



Support



Outreach

Regular check-ups and ongoing support for residents after leaving Sanctuary to independent accommodation

Also support for those awaiting a place at Sanctuary, or those unable to keep a place due to issues



Ancillary

Help residents with doctor registration and visits as well as navigating their benefits, tax, and social security

Help residents with practical life skills, such as hygiene, fitness, shopping, cooking and general well being



Why we do it



Homelessness in Jersey is a real and growing problem



It is almost always the visible end result of people struggling with far more complex issues



Our combination of safe accommodation, help and support is the proven best solution to reduce homelessness



Outcomes
1 Jul 2023-
30 Jun 2024



95%

of residents in the period have progressed with their goals and seen tangible positive outcomes

64%



of residents who have been with Sanctuary 6+ months are in full time employment

10



residents moved into independent living, either in their own flats or reunited with family

14



residents reunited with family members, including their children, with help and support from the team



XXXXXXXXXX.



The year ended 30 June 2024 was an incredibly busy period for the team here at Sanctuary Trust with demand once again exceeded supply for our services. We had full occupancy in our houses throughout the year and the waiting list for residents looking for entry grew further. Residents who entered the house had on average been on the waiting list for 52 days and unfortunately there are no signs of the situation abating. We are working ever closely with all the other providers, support organisations and government departments in the sector to try and ensure the most vulnerable are supported.

On the plus side, with more and more of our former residents successfully transitioning into their own private accommodation our outreach services to ensure they have help even after leaving Sanctuary has grown and no supported 31 former residents in the period, underlying our commitment to ensure long term successful outcomes and highlighting the path to success is often one of highs and lows and ongoing support is a vital component of our service.

Our residents are on average with us for over a year, to see another 10 transition into the community in this period was wonderful, it shows that our work, giving the right level of support and care has incredibly successful positive outcomes.

It is our team that delivers these outcomes and over the year we grew to 11, with an average length of services of over 2.5 years at Sanctuary. All 11 are qualified individuals in their fields, with 8 studying to further those qualifications and with all 8 passing qualifications in the year which brings me genuine pleasure, rounding off a successful year.'

Sarah Tumelty
House Manager



≡ **The difference we make**

“The staff at Sanctuary are so helpful, they go out of their way to help or assist with any problems...to be honest, I've never known a group of people who go out their way to help strangers. They listen to you when you're down or even when you're up, I feel very privileged to be part of the Sanctuary Trust and part of that is due to the staff who go above and beyond to make us feel welcome”

“Just a line to thank you and your great staff for all the work you do to support people in the vulnerable times of their lives. It is for me a great joy that we have Sanctuary Trust with all the potential you give to people”

Member of staff from the prison chaplaincy team

“I was in a shed with little to no prospects. Now, thanks to Sanctuary Trust, I have my own room and all of my day-to-day needs are being met. More than that, I'm treated like a human and can finally work towards a positive future”

“We love helping you guys out because the work you do for the community is incredible. That's why we like to give you some discount”

Regular supplier

“Sanctuary house literally saved my life. Gave me hope that I can build my life back. Staff were really great listeners and I needed someone to talk to. Sanctuary House came into my life just at the right time. I had my suicide all planned out and they gave me that glimmer of hope to carry on. Forever grateful”





Get involved!

1 Volunteer



Whether it is a one off occasion or a regular commitment at Sanctuary we have roles and tasks that could be done by volunteers. If you do have spare time and think you could assist us please drop us an email at info@sanctuarytrust.org.je.

3 Board



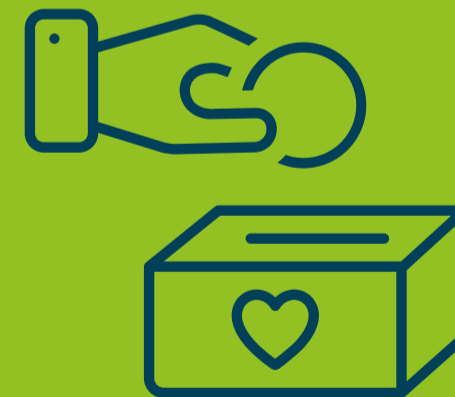
The Board of Trustees at Sanctuary oversee the running of the charity, setting the strategy, guiding the team and assisting with navigating through the regulatory requirements. Trustee roles are on a voluntary basis and require a time commitment from all those on the Board. If you would like to understand more please contact us at info@sanctuarytrust.org.je.

2 Staff



Sanctuary is always on the lookout for new members of the team. We are a small team who work closely together to deliver help and support to our residents. The roles are flexible and require initiative and understanding. If you are interested please look at the website or contact us at info@sanctuarytrust.org.je.

4 Donate



Running Sanctuary costs a substantial amount of money which means we are always fundraising and always grateful for any donations. Please follow this link if you wish to donate <https://www.justgiving.com/thesanctuarytrust-jersey>.